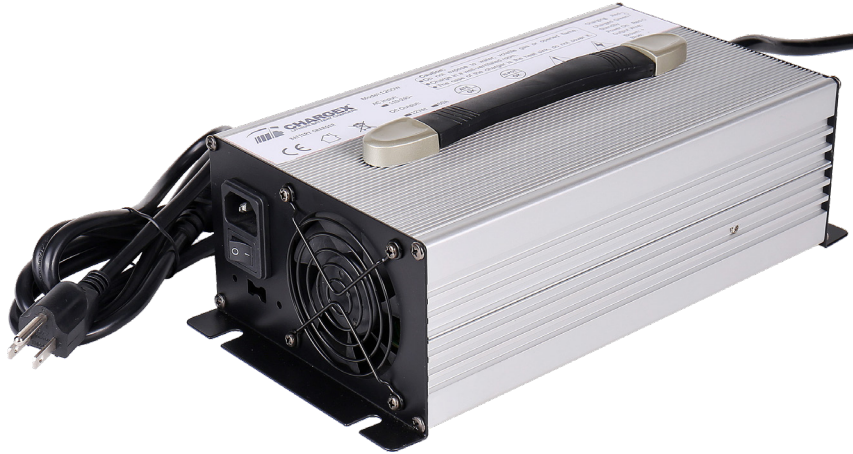
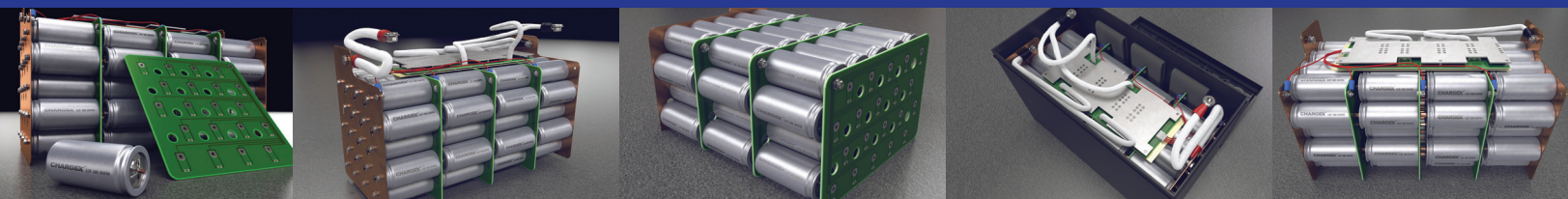


TECHNICAL SPECIFICATIONS



12V 80A LITHIUM ION BATTERY CHARGER



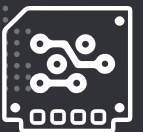
SAFE



LiFePO₄
CHARGER

ALUMINUM CASE

Light weight and rugged



HIGH EFFICIENCY

≥90% efficient, Eco-friendly



MULTI-FUNCTION PROTECTION

Over voltage, over current, over temperature, short circuit, reverse polarity



Model: **CXC1280**

12V 80A Lithium Ion Battery Charger (LiFePO4)

ALUMINUM

CC / CV / FLOAT

LIFEPO4

COMMERCIAL | MARINE | RV | GOLF | AUTOMOTIVE | UPS | OFF-GRID

The CHARGEEX® CXC1280 - 12V 80A Lithium Ion Battery Charger features the latest and most advanced Lithium Iron Phosphate - LiFePO4 Battery Charging Technology and is designed for CHARGEEX® Lithium Ion Batteries. The CXC1280 is engineered with 2 or 3 stage charging modes CC, CV, Floating, silent cooling fans and state of the art heat dissipation.

ADVANTAGE*

CHARGE VOLTAGE

LiFePO4 (Constant Current)	14.6V
Li-ion (Constant Voltage)	16.8V
Lead Acid (Constant Voltage)	14.7V
Float Voltage	13.6V
Watts	1500W
Input Voltage	110-230Vac
Max Current (Amps)	80A

ADVANTAGE*

TECHNOLOGY

Case	Aluminum (Black or Silver)
Efficiency	≥90%
Charging Modes	CC / CV / Float
Cooling	Fan cooled (silent)
LED Indicators	Red (Power on / Charging) Green (Full Charge)
Input Connector Option	US, EU, CN, IT, UK, ZA, AU
Output Connector options	Ring, Alligator, IEC, XLR, Anderson, 2.1/2.5DC, RCA, XT60,

ADVANTAGE*

DIMENSIONS | WEIGHT

Weight	12.1Lbs / 5.5kg
Length	11.81" / 300mm
Width	5.9" / 150mm
Height	3.54" / 90mm

ADVANTAGE*

SAFETY | PROTECTION

Over Voltage	Yes
Over Current	Yes
Over Temperature	Yes
Automatic Short Circuit	Instant
Reverse Polarity	Instant
Flame Retardant	Yes

